

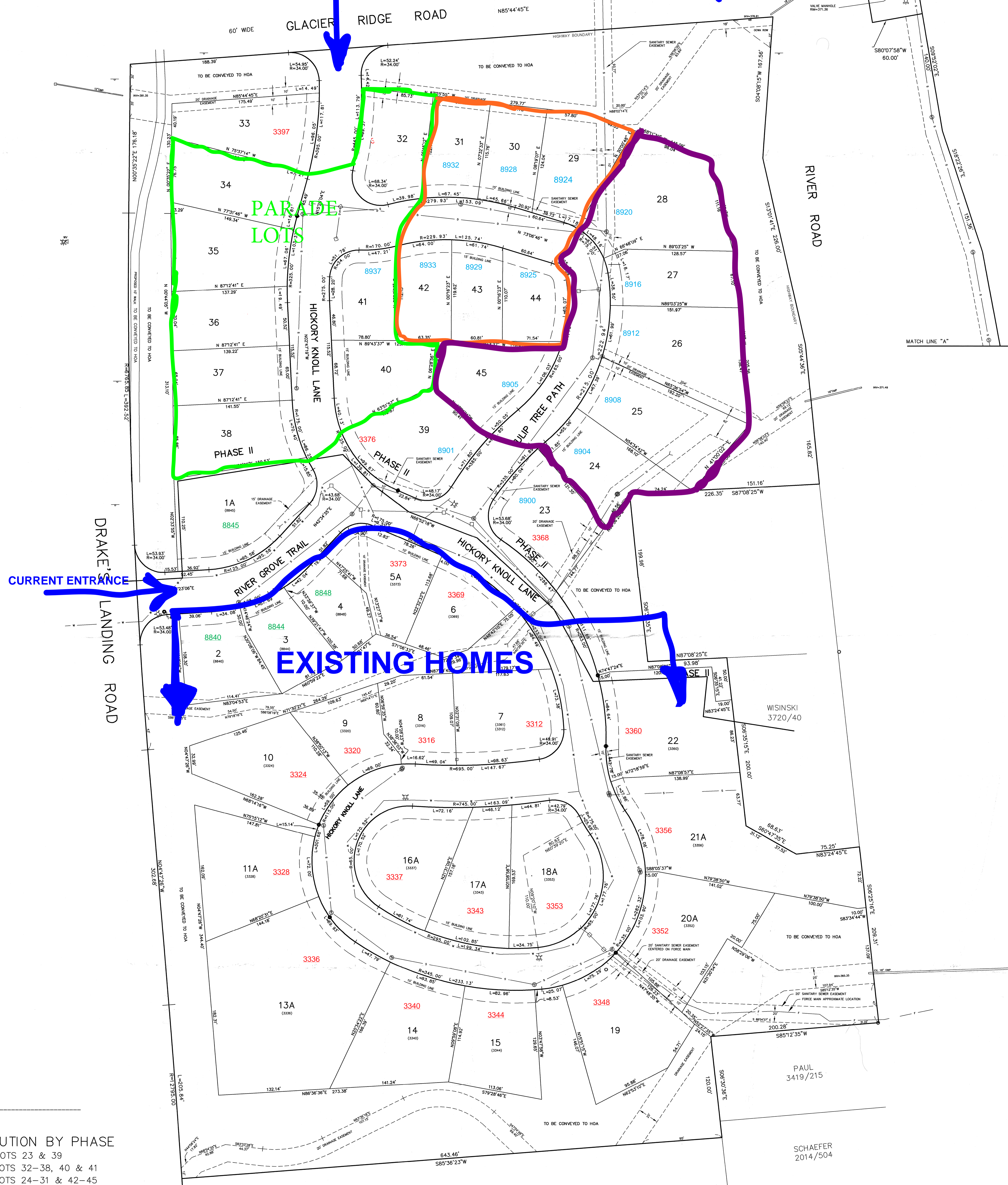
LONGVIEW COMMUNITY

PARADE ENTRANCE

RADISSON ENTRANCE FROM RIVER RD.

CURRENT ENTRANCE

EXISTING HOMES



LOT DISTRIBUTION BY PHASE
 PHASE IIA LOTS 23 & 39
 PHASE IIB LOTS 32-38, 40 & 41
 PHASE IIC LOTS 24-31 & 42-45

ZONE - PUD
 PART OF THE RADISSON NEW COMMUNITY

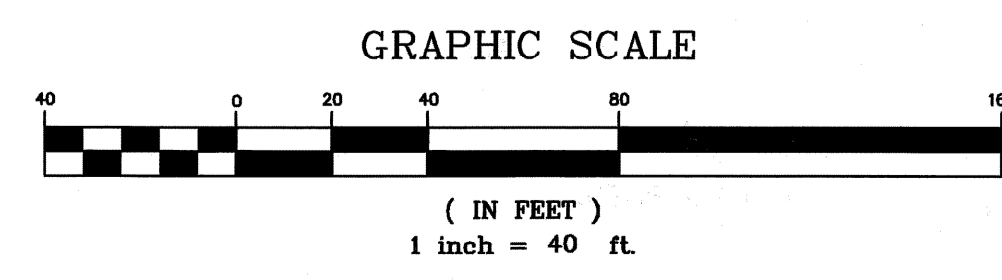
9.7 ACRES PHASE II

SANITARY SEWER AND MANHOLE
 DRAINAGE MANHOLE, LINE AND CATCH BASIN
 WATER LINE, HYDRANT AND VALVE

VERTICAL DATUM - NAVD29

EXISTING CONTOUR 125

(4567) DENOTES STREET ADDRESS



NEW YORK STATE URBAN DEVELOPMENT COPR.
 2405/302

THE UNDERSIGNED SURVEYOR HEREBY CERTIFIES THAT THIS MAP IS MADE FROM AN ACTUAL SURVEY OF THE PROPERTY SHOWN HEREON COMPLETED AUGUST 22, 2001

J. STEPHEN SEHNERT
 LAND SURVEYOR No. 45023

ALTERATIONS OR ADDITIONS TO THIS SURVEY MAP ARE PROHIBITED, EXCEPT AS PROVIDED IN SECTION 7209, SUBDIVISION 2, OF THE NEW YORK STATE EDUCATION LAW.

WHEN EXPERIENCE MATTERS
APPLIED EARTH TECHNOLOGIES
 STEPHEN SEHNERT
 LAND SURVEYOR
 BALDWINVILLE, NEW YORK

AMENDED PRELIMINARY PLAN
RIVER GROVE
 PHASE II
 PART OF LOT 61
 TOWN OF LYSANDER
 ONONDAGA COUNTY, NEW YORK

OCTOBER 1, 2021
 REV. NOVEMBER 11, 2021 328.3964 P1